



School of High Class Professional Tailoring



scuolaaltasartoria.it



Melzo, via San Martino, 10 - Italy



+39 328 56 39 434



© hanninen

The School

The school was founded in response to demand for **highly specialised professionals** in the fashion industry and in particular, bespoke tailoring.

By following our courses, students will learn not only **professional skills** adapted to modern requirements, but also those **secrets of the craft** that in times past were so hard-won by long apprenticeships.

Courses

Our courses follow a modular and progressive approach, with the objective of producing professionals who will be capable of entering the world of bespoke tailoring:

- **Tailoring Fundamentals 50hrs**
covers handstitching techniques, hems, buttonholes
- **Advanced Tailoring 100hrs**
covers pockets, trousers, jacket making techniques
- **Apprentice Tailor annual 1300hrs**
a complete programme focusing on the creation of bespoke jackets/coats, including fittings and correction of cut and fit



Who are our courses for?

- **Anyone** who wants to obtain rapid and effective training in the bespoke tailoring sector
- **Apprentice tailors** who wish to perfect their skills and enter the workforce promptly
- **Fashion school** students who want to integrate practical training
- **Fashion boutique assistants** who would like to offer their clients an alterations service



© hanninen

Language

Courses are designed for students who come **from all over the world** and they **can be taught in English** by mother tongue teachers in addition to the Italian language.

Information/enrollment

-  +39 328 56 39 434
-  scuolaaltasartoria.it
-  segreteria@scuolaaltasartoria.it



Location

The school can be found in **Melzo**, a short train trip from the centre of Milan. For students of the full-time course, there are various accommodation options available, e.g. **B&B**, **private apartment**, **hotel** or **residence**. Please contact reception for information.

-  via San Martino, 10
20066 Melzo, Italy
-  +39 328 56 39 434

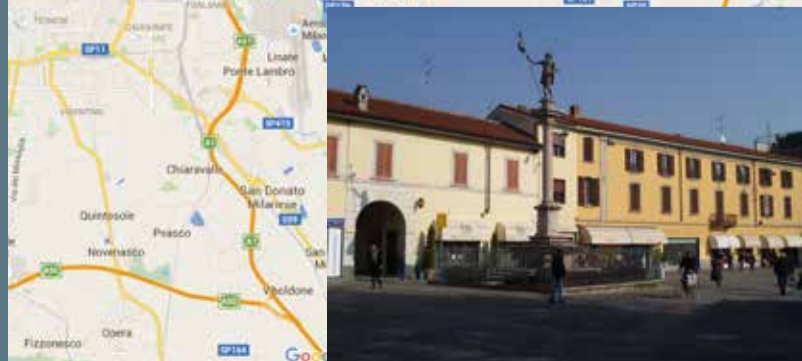
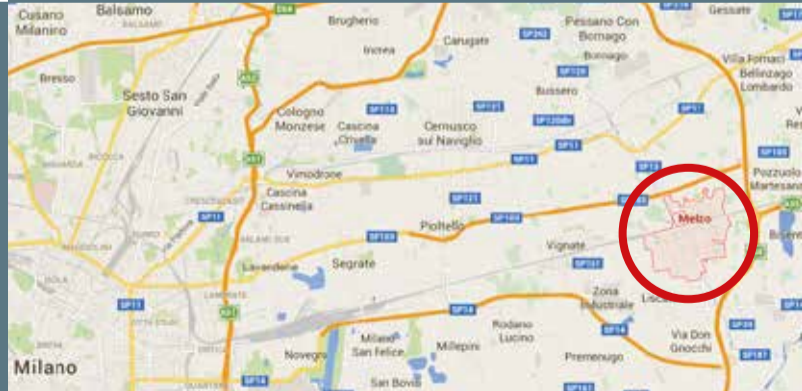
Arriving in Melzo

BY TRAIN
from the Centre of Milan 27'
Suburban train line **S5** Varese-Treviglio or line **S6** Novara-Treviglio

BY CAR
from Milan 25'
Take the highway: SP103 (Cassanese), or SP14 (Rivoltana), or SP11 (Padana Superiore), or SP415 (Paulese)

from A4 Torino/Venezia or A1 Milano/Napoli:
Take Outer Eastern Bypass A58 (Tangenziale TEEM) exiting at Pozzuolo Martesana

BY PLANE
from Linate
Bus to Pioltello + Suburban Train S5 o S6 to Melzo 25'
Car or Taxi to Melzo 15'



graphic design gariellamoro.net